



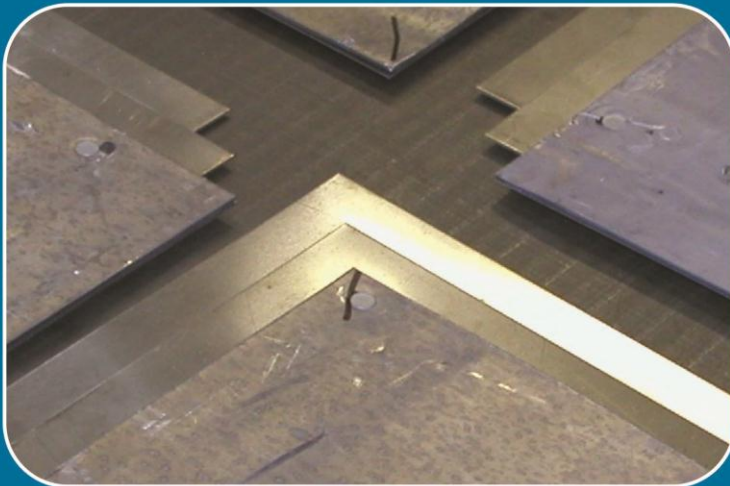
A UNIQUE AND INNOVATIVE MAGNETIC SHIELDING SOLUTION

Principally, a magnetic shield requires a ferromagnetic material with a good low field permeability, low coercive field strength and of an appropriate thickness. MagnaShield is made from 1mm thick electrical steel specially selected for its permeability and coercive field properties

MagnaShield is supplied in panels, up to 1 meter square, and 1,2,3 or 4 ply thick to meet the customers shielding requirements.

Wiltan are apply to advise the customer on shielding requirements and are able to assist in before and after field surveys

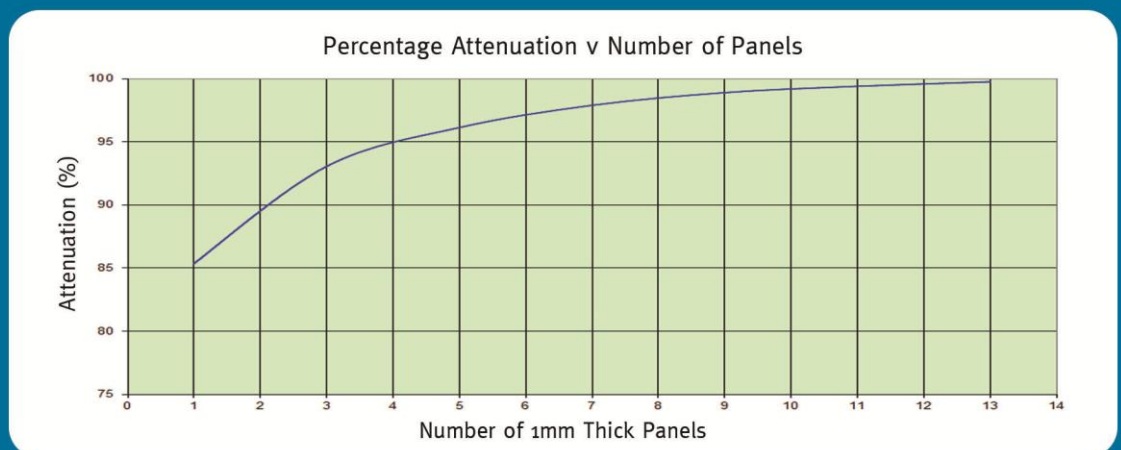
Panels of 2 ply and above are supplied with a 20mm overlap to ensure continuous integrity across the panel joints



The product is especially suitable for the cladding of rooms or large enclosures where it may be specified to shield sensitive equipment against interference from outside sources. Alternatively, it may be specified to shield operators from equipment producing high, potentially dangerous, fields.

Fig 1: 4 off 3 ply panels showing the 20mm overlapping arrangement.

Fig 2:
Typical
Attenuation





WILTAN
magnetic components

MagnaShield

The two most frequent applications of MagnaShield are: -

Electromagnetic shielding for high voltage applications

The demands for power are increasing daily across the world. This power must be transmitted at high voltage causing electromagnetic interference such as 'jitter' on PC monitors.

MagnaShield is particularly sensitive at common power transmission frequencies of 50/60 Hz and provides continuous protection from EMI, even at the joints. This is due to the distinctive way in which the panels are manufactured.

The fixing method is simple and does not require any specialised skills MagnaShield can totally enclose the source of EMI in sub-stations and transformer buildings because the panels can be preformed, by Wiltan if required, so that the floor, ceiling and walls are completely shielded, if necessary.



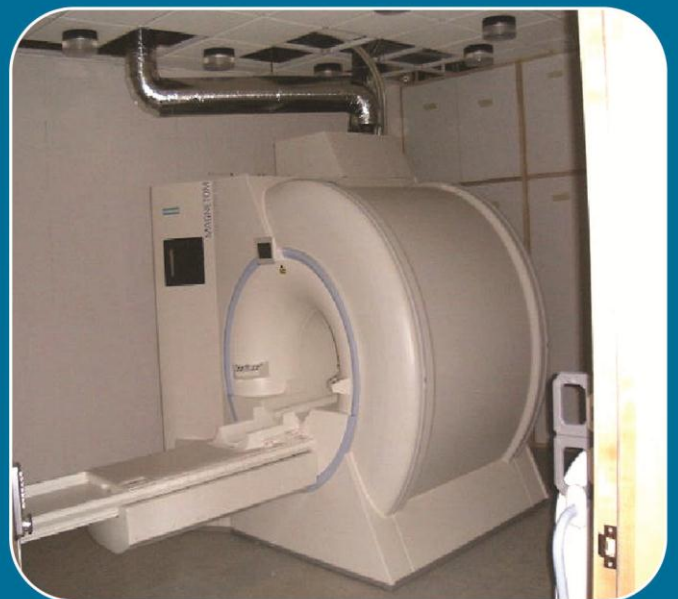
Electromagnetic shielding for hospital / clinic applications

MagnaShield is suitable for use in high or low frequency electromagnetic field areas. It is particularly suitable for use with MRI scanners: open field, high field and very high field scanners may be successfully shielded with MagnaShield.

The use of Imaging Technology for medical diagnosis and treatment is increasing and includes technologies such as :-

- X-rays
- Magnetic Resonance Imaging (MRI)
- Positron Emission Tomography (PET)
- Gamma Knife Technology

With the increasing utilisation of imaging technologies, the protection of staff who are regularly exposed to magnetic radiation is critical.



WILTAN
magnetic components

Wiltan Ambassador Buildings Pontnewnydd Industrial Estate Pontypool Torfaen NP4 6YW
T. +44 (0)1495 750 711 F. +44 (0)1495 753 730 sales@wiltan.co.uk www.wiltan.co.uk